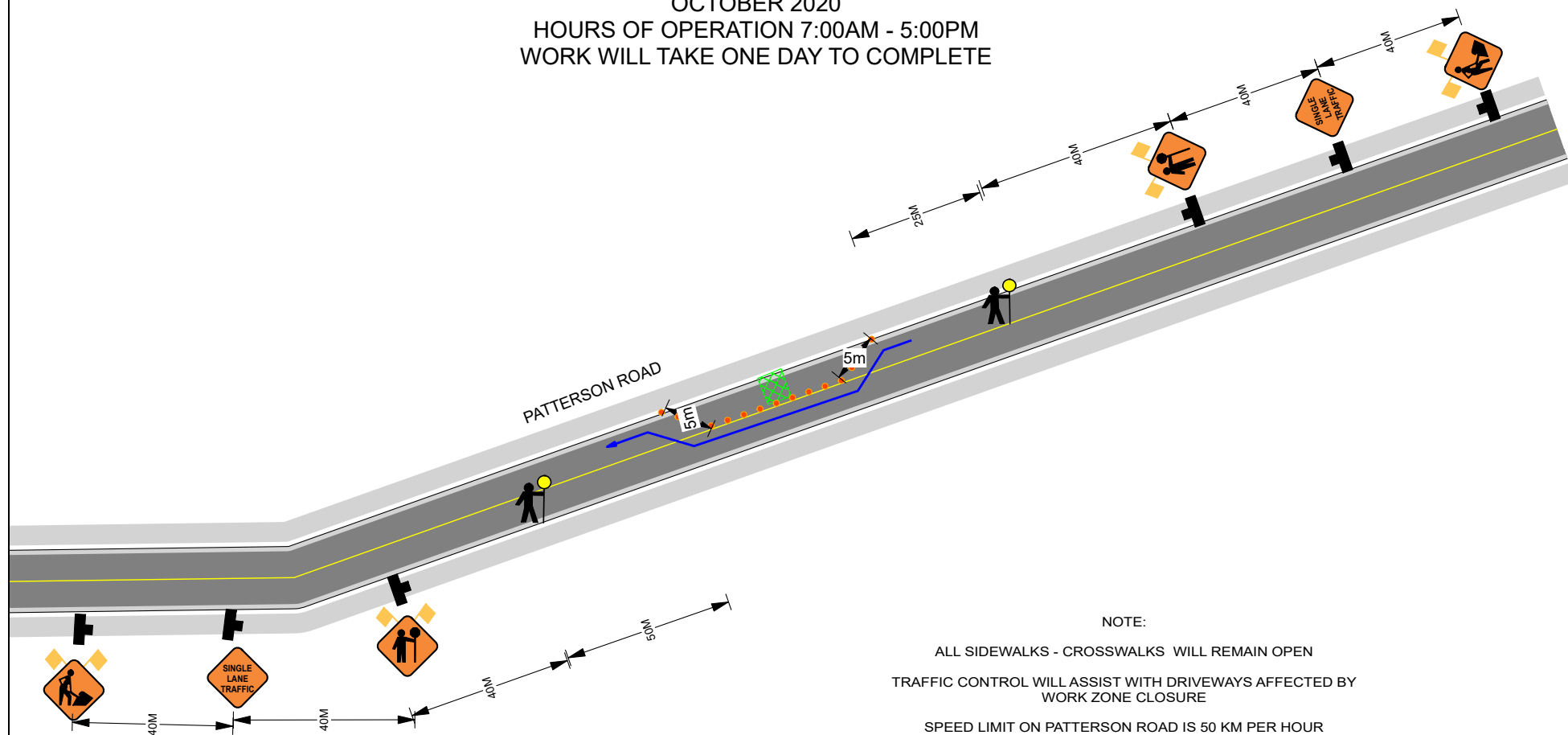


OCTOBER 2020  
HOURS OF OPERATION 7:00AM - 5:00PM  
WORK WILL TAKE ONE DAY TO COMPLETE

OCTOBER 2020  
HOURS OF OPERATION 7:00AM - 5:00PM  
WORK WILL TAKE ONE DAY TO COMPLETE



A diagram of a road layout with various traffic control elements. The elements are labeled on the left and represented by icons on the right. The labels are: DIRECTION TRAFFIC FLOW (blue arrow pointing right), TUBULAR MARKERS (a row of orange dots), WORK AREA (a green hatched rectangle), SIGN STANDS (a black T-shaped post), TRAFFIC CONTROLLER (a black silhouette of a person holding a yellow sign), and BUS STOP (a blue rectangle with a white 'T').

ALL SIDEWALKS - CROSSWALKS WILL REMAIN OPEN

TRAFFIC CONTROL WILL ASSIST WITH DRIVEWAYS AFFECTED BY  
WORK ZONE CLOSURE

SPEED LIMIT ON PATTERSON ROAD IS 50 KM PER HOUR  
ALL SIGNS WILL BE PLACED ON TRIPOD STANDS WITH FLAGS

ADVANCE WARNING SIGNS WILL BE PLACED ON ALL INTERSECTING  
SIDE STREETS WHEN REQUIRED